
FIDLOCK®

WINCH Assembly Guide



momentum



elegance

handle
female



base
male



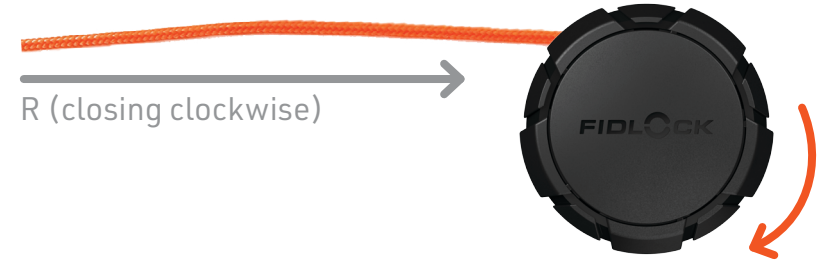
lace guides, eyelets and laces are
NOT included in scope of delivery

CCW and CW version available:
seperate or as set

L (closing counter clockwise)

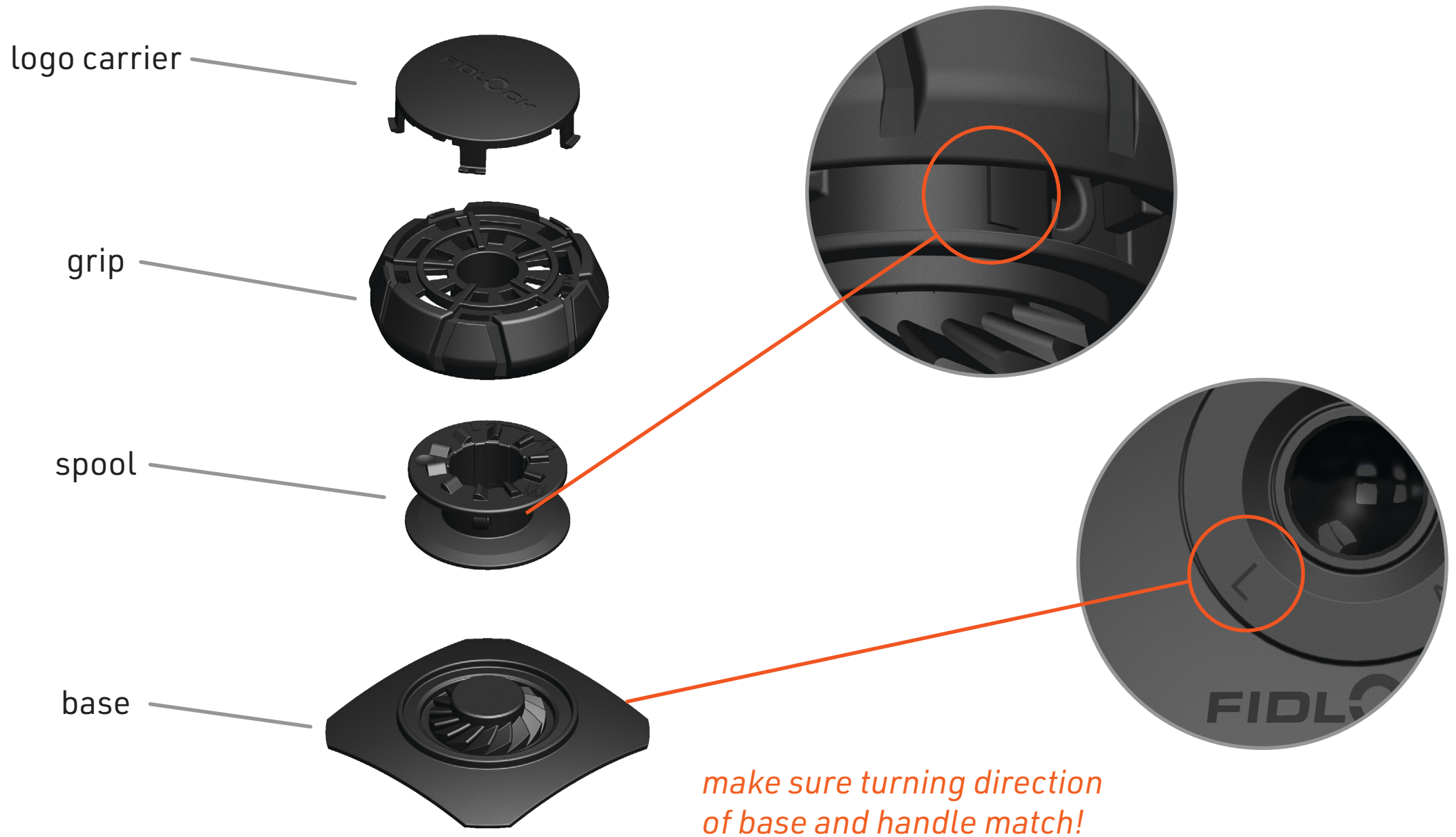


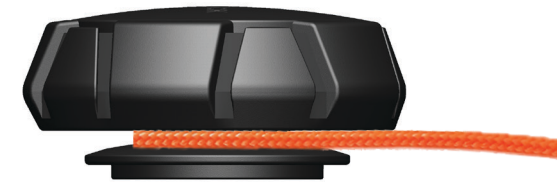
R (closing clockwise)



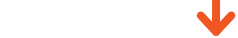
available handle versions:







engaging
of base and handle
by magnetic attraction



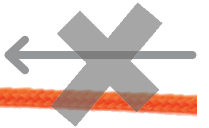
Attention: lace will always pull in the
direction of closing
make sure to choose version turning
the direction which is most sufficient
for your lacing design



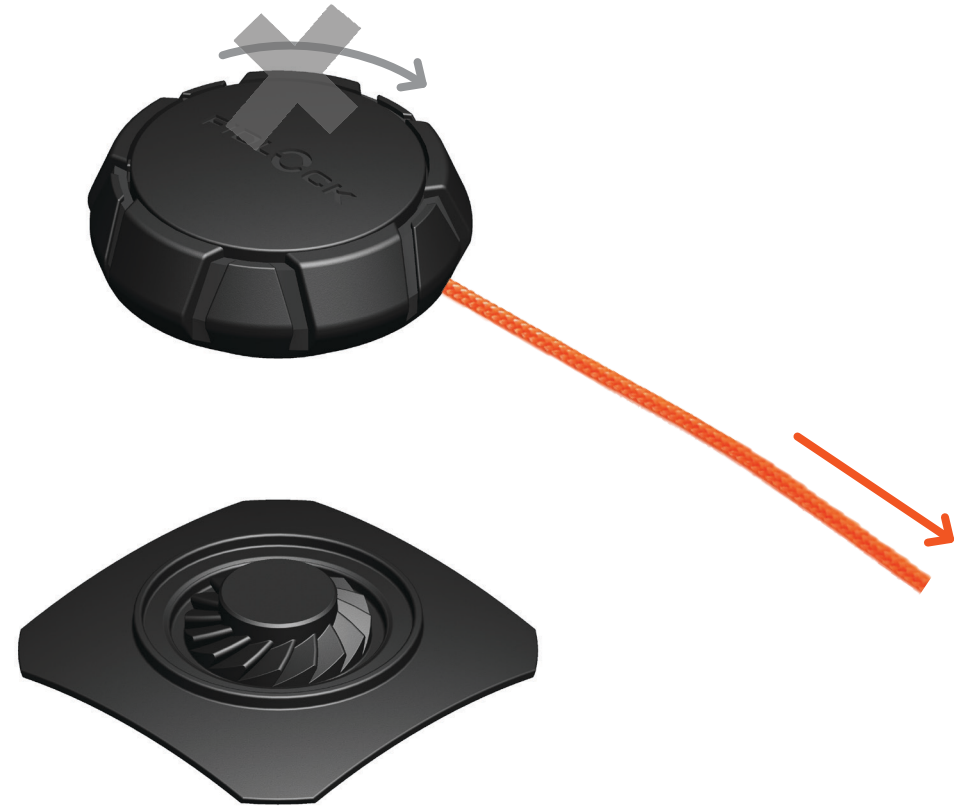
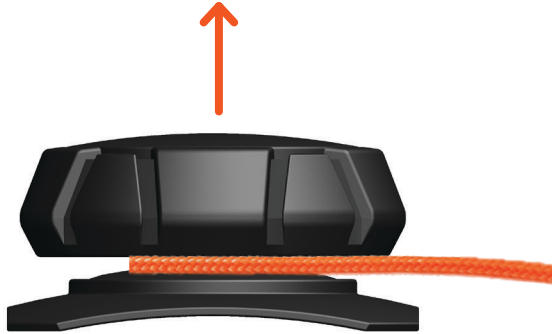
tightening
by turning handle
counter clockwise



ratcheting
by turning handle
clockwise



detaching
by simply pulling or tilting
handle off the base



unspooling
by itself once handle
is detached from base

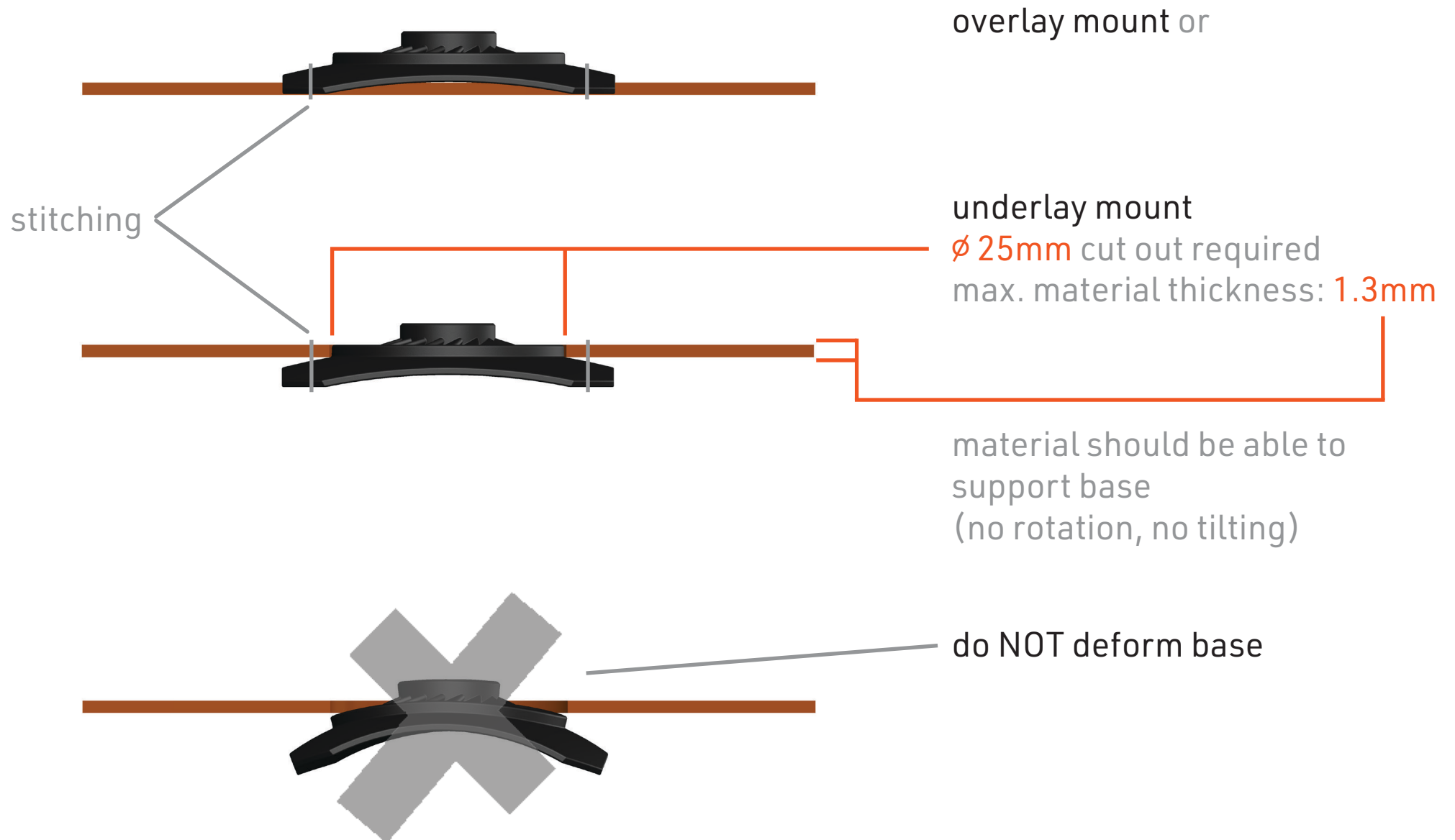


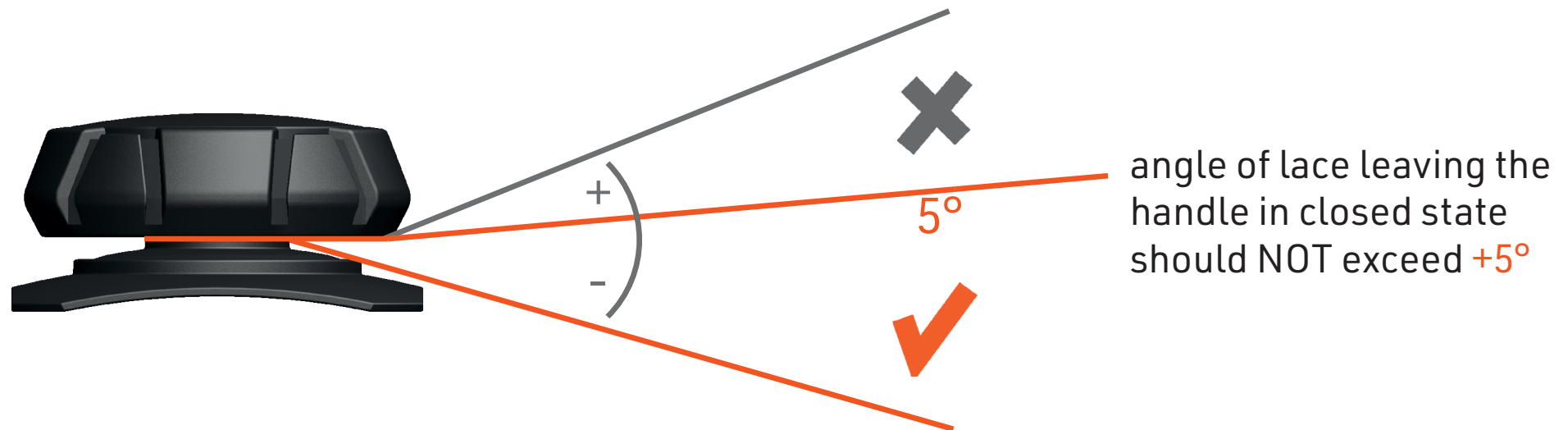
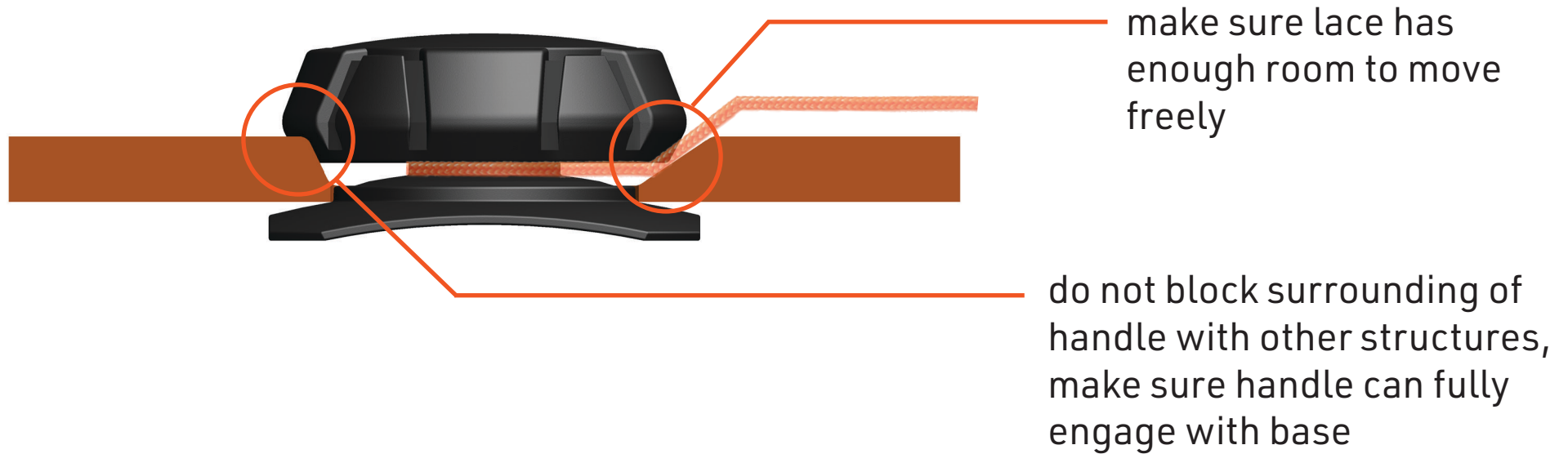
assembly by stitching through plastic
we recommend:
use leather needle
if hard to stitch - soak base in water for a couple of hours



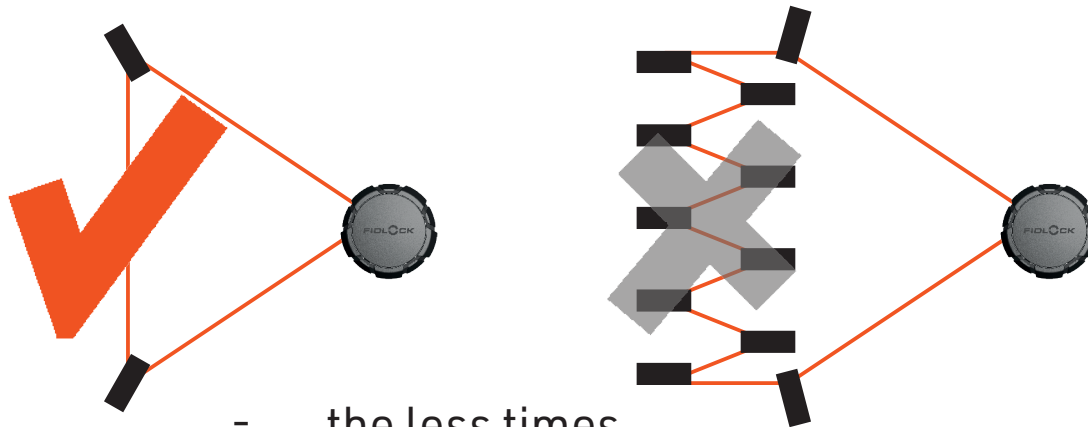
do NOT cover this area

do NOT heat above 80°C
magnet inside

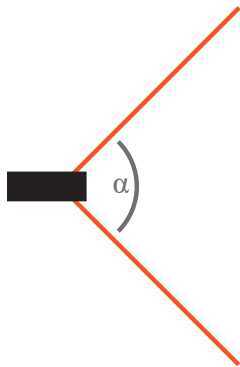




laces move more freely:

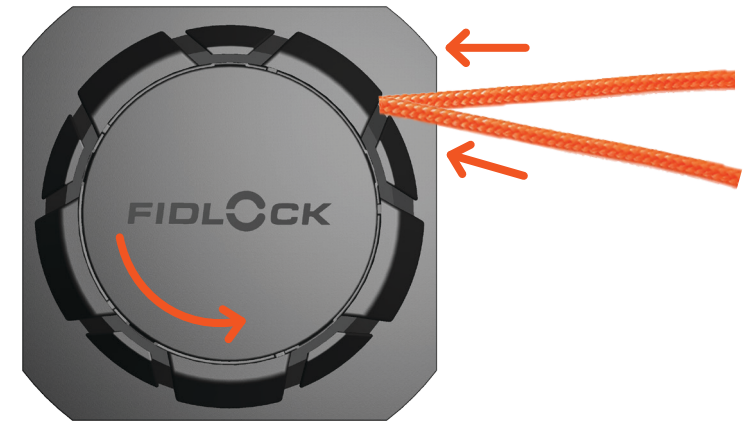


- the less times the lace is redirected



- the flatter the angle of each redirection
- the lower the friction between lace and lace guide, plastic or webbing

make sure lace is pulled through lace guides easily
so pull is transmitted to all areas of lacing

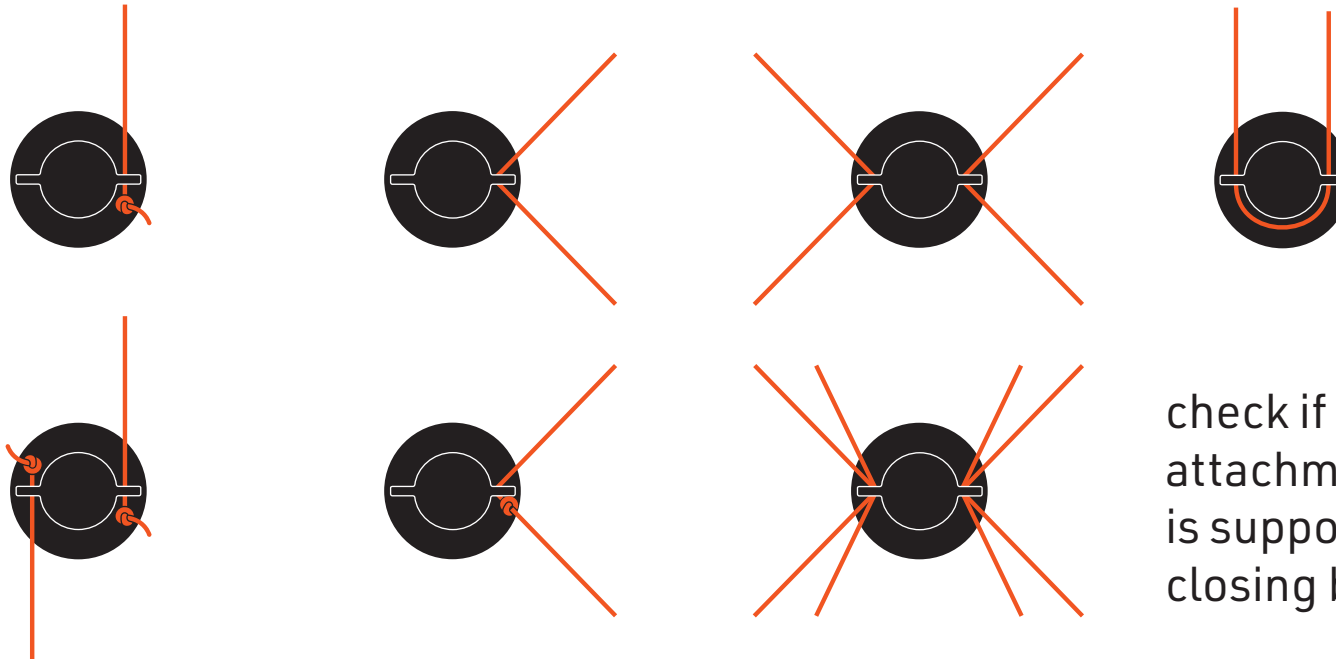


Attention!

lace will always pull in the direction of closing

make sure to choose version turning the direction which is most sufficient for your lacing design

multiple lace attachment options possible
max. lace diameter: 1.2 - 2.75mm



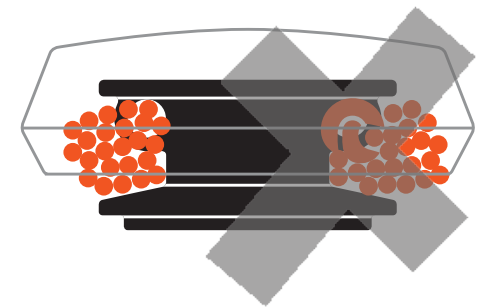
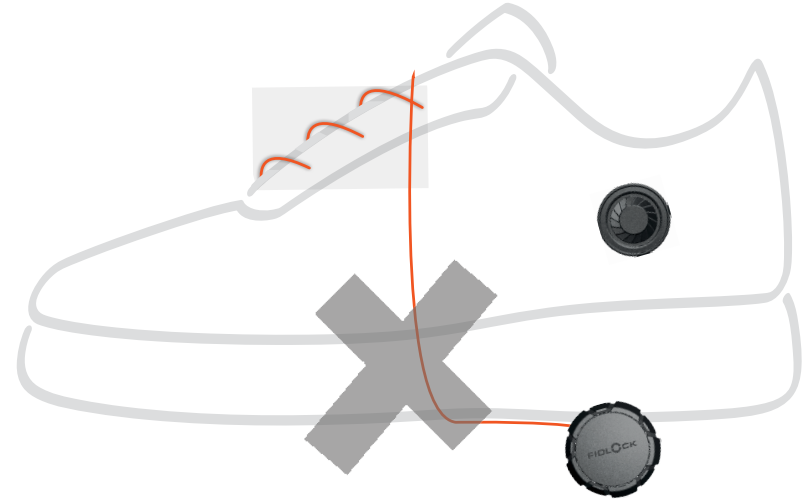
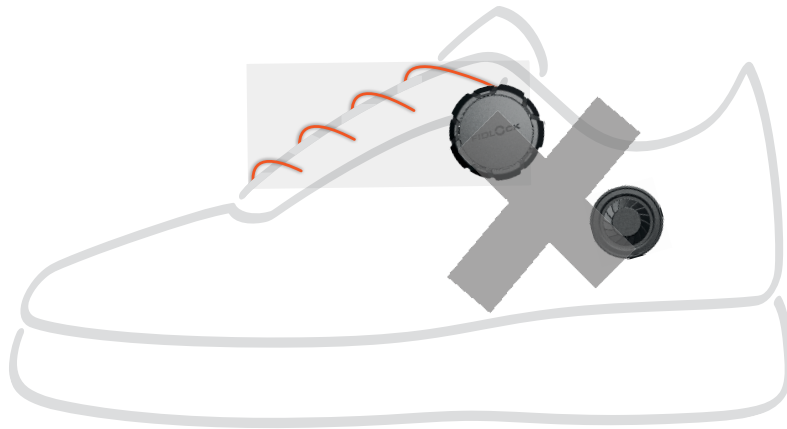
check if chosen lace attachment method is supporting proper closing behavior

NOTE if using more than 1 lace:
all laces will be tightened by the SAME amount when closing

we recommend:

- do not use too stiff laces to ensure smooth unspooling
- do not use uncoated stainless steel wire to prevent abraision of plastic parts
- do not use pure cotton lace to prevent abraision of lace





define lace length
as long as necessary - make sure handle can attach to
base for closing
as short as possible - make sure fully closed the spool
can take all lace

check function !
conduct performance tests on applications in real conditions !