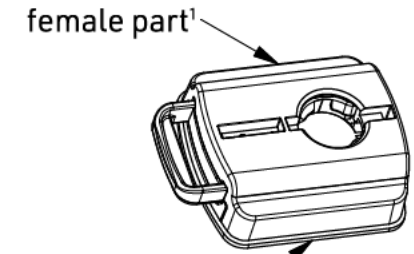
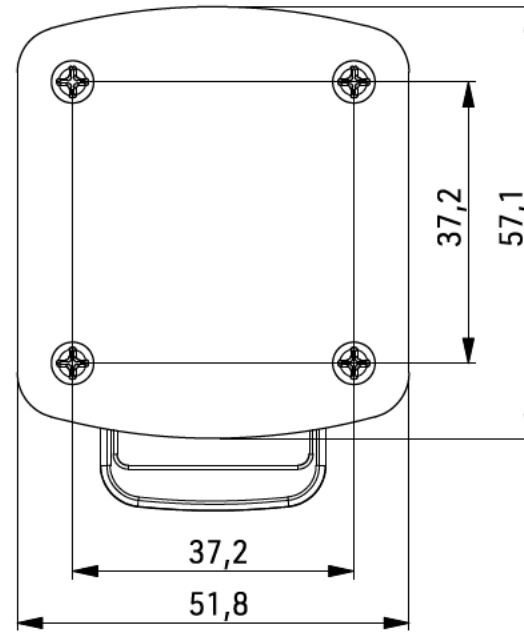
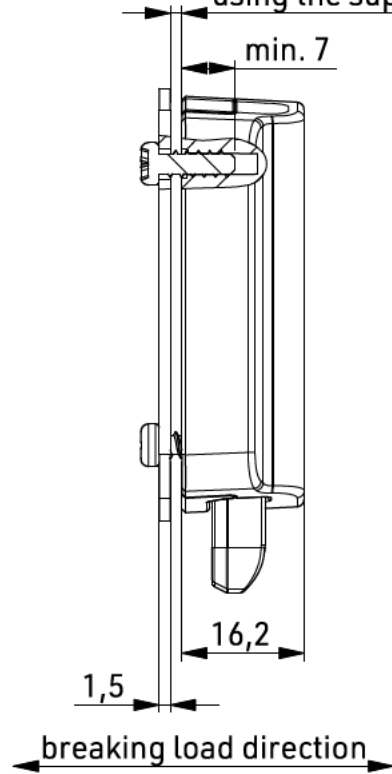
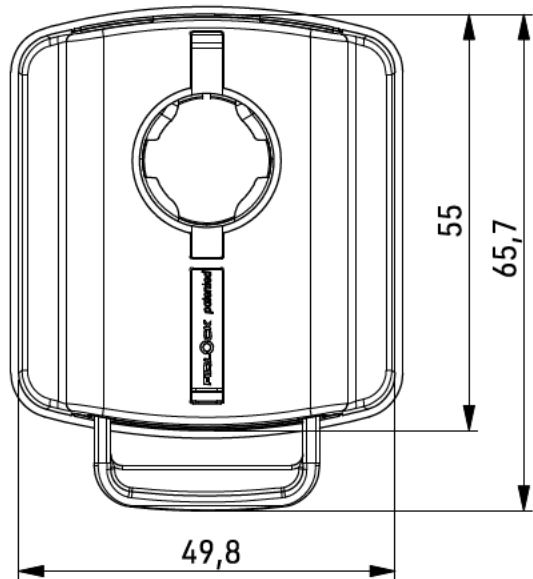


Material thickness must not exceed 1.5 mm when using the supplied screws.



scale 1:2

nominal values in millimeters [mm]

OPENING	pull
MATERIAL	POM ¹ (58%), PA66GF ¹ (19%), PP ² (11%), NdFeB ¹ (10%), stainless steel (1%)
COLOUR	black
WEIGHT	~ 37,9 g (weighed) with counter plate and screws
BREAKING LOAD**	588 N

GENERAL NOTES*

Fastened with included self tabbing screws (Ø 3,5 x 10) with minimum screw insertion 7mm.

05180-000002 (BLK):
female part, counter plate, screws

05181-000002 (BLK):
female part, screws

ARTICLE NO.

05180-000002 (BLK)
05181-000002 (BLK)

PRODUCT

SNAP pull female L

SCALE

1:1 DIN A4

REVISION / DATE

R00 14.08.25

* The manufacturer of the end products in which FIDLOCK fasteners are used, bears the responsibility for thoroughly testing that the FIDLOCK products are suitable for the intended applications.

** According to test specification QM-TP-001

*** The nominal mass fractions percentage of the materials are given as rounded whole numbers. Fractions below 0.5% are not given.