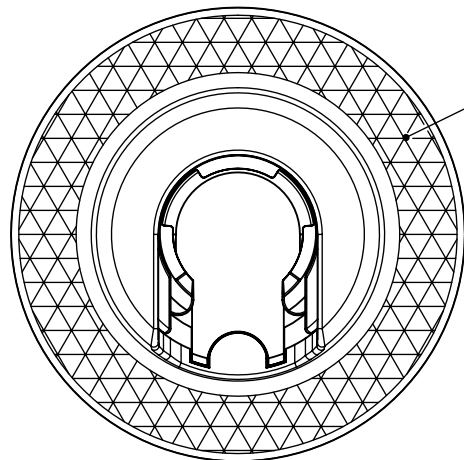
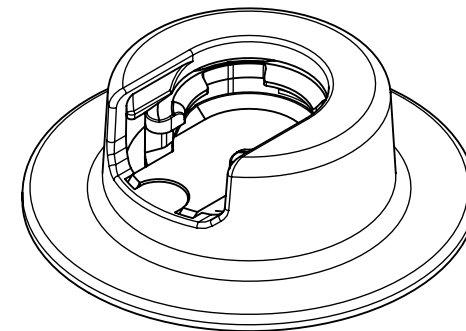


FIDLOCK®



Stiching area

Proceed like stitching zipper.
Use a zipper presser foot and
stitch lenght 2-3 mm.
(For securing the thread we
recommend choosing a position
next to the Fidlock part. Otherwise
stability could be reduced)



PRODUCT	Snap female S sewable
OPENING	lateral slide
MATERIAL	PA6, PA66-GF, NdFeB, Epoxy
COLOUR	black
WEIGHT	3,3 g
LOAD CAPACITY	2 kg
GENERAL NOTES	

ARTICLE NO.	05450-000002 (BLK)
SCALE	2:1
DATE	20.06.2022
AUTHOR	ML

patented technology.