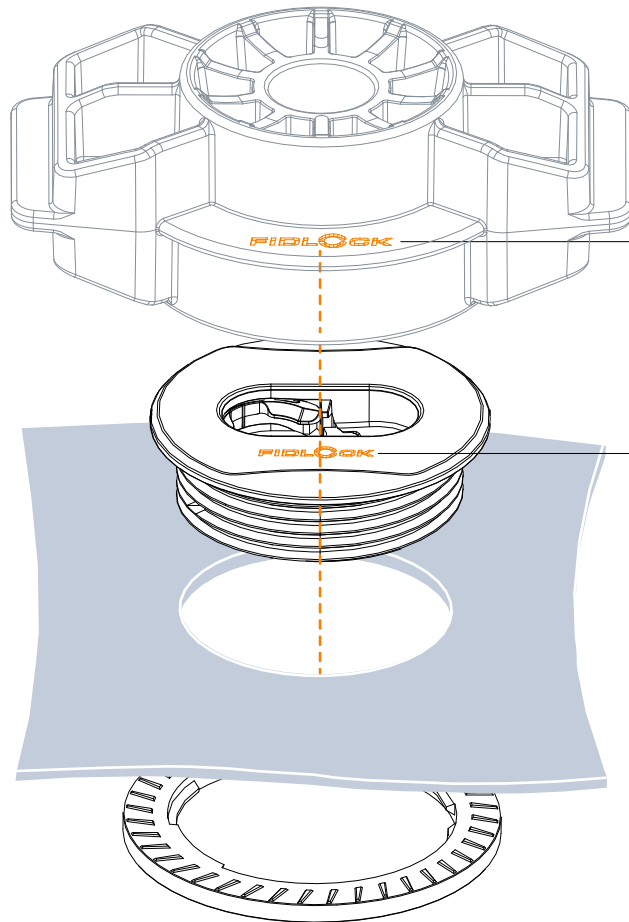


Assembly guide

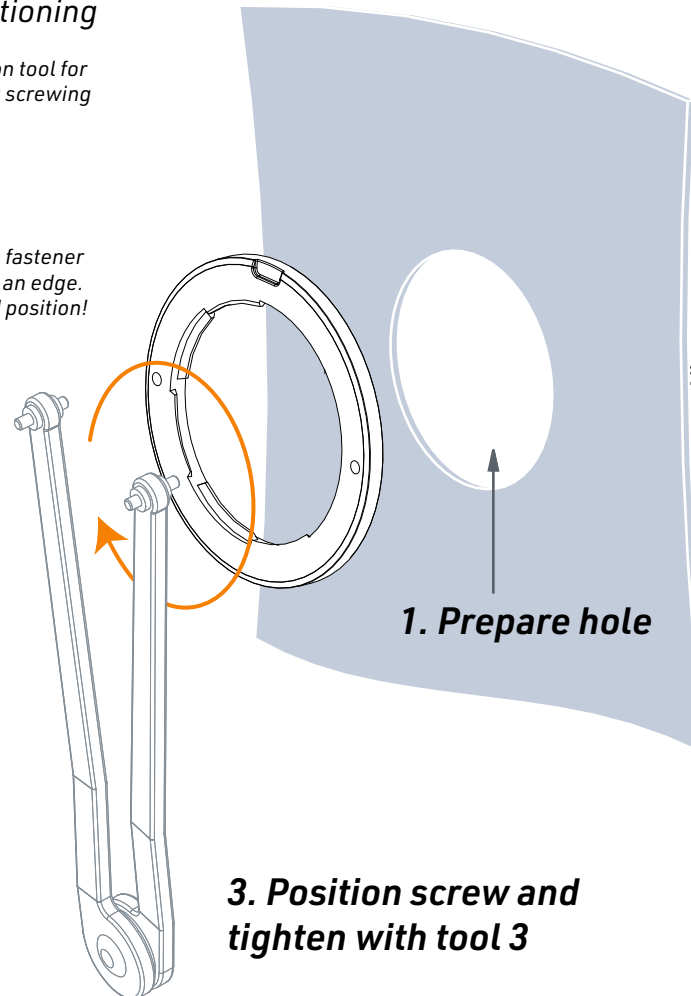
SNAP female M inset screw
+ tool 31 & 3



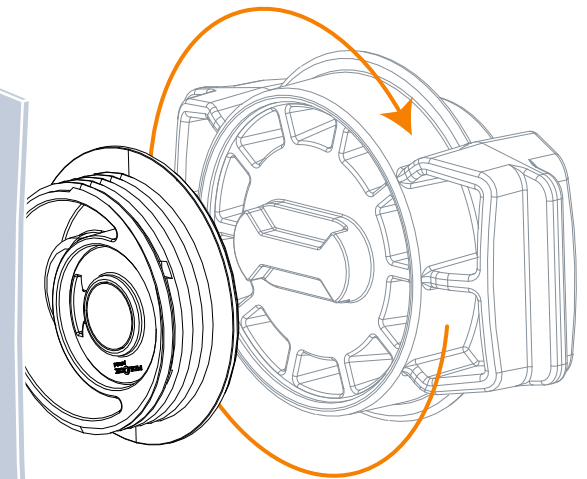
Logo positioning

Logo marking on tool for orientation during screwing

Place and align the fastener with logo parallel to an edge. Avoid overhead position!



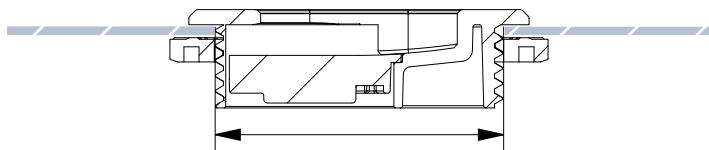
1. Prepare hole



2. place fastener and fix with tool 31

3. Position screw and tighten with tool 3

Section with positioned fastener



recommended cut hole diameter 38 mm

ARTICLE NO.	05511-000002(BLK) FID-010375
DATE	17.02.2023
AUTHOR	EE

patented technology.