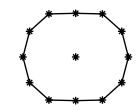
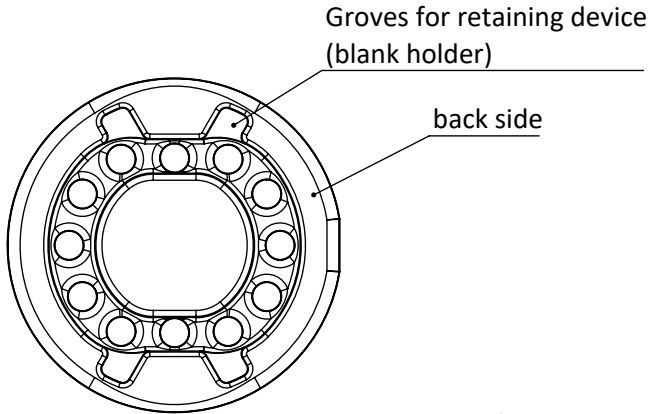


6 5 4 3 2 1

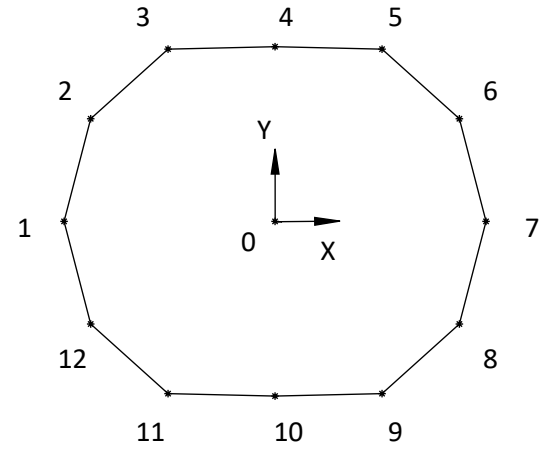
D

D



Scale: 1:1  
DXF - Sewing path

(Fidlock\_Cointrap\_15\_universal\_sewing\_path.DXF)

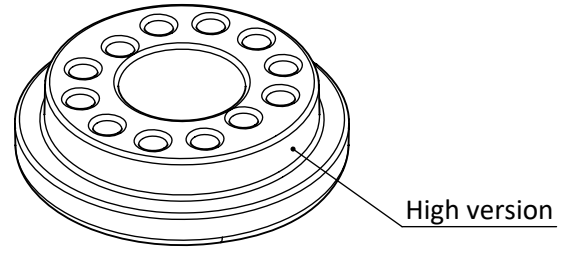
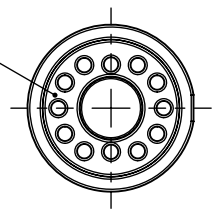


Scale: 4:1

C

C

top side  
(webbing side)



High version

B

B

**COORDINATES**  
(in mm)

Position	X	Y
1	-7	0
2	-6,1	3,4
3	-3,5	5,7
4	0	5,8
5	3,5	5,7
6	6,1	3,4
7	7	0
8	6,1	-3,4
9	3,5	-5,7
10	0	-5,8
11	-3,5	-5,7
12	-6,1	-3,4

**High version not suitable for helmet applications!**

A

A

Fidlock GmbH   Kirchhorster Str. 39   30659 Hannover				Status: UNRELEASED											
				Surface: VDI 3400 Ref. 30		For 15 mm webbing				Cavities:					
				Date:	Name:	<b>Title: Cointrap male UN</b> <b>Description: Sewing path</b>									
				Drawing by	21.12.23 ML										
				Checked by											
				Released by		Project Name: Cointrap male UN									
				THE INFORMATION CONTAINED IN THIS DRAWING IS THE SOLE PROPERTY OF FIDLOCK GmbH. ANY REPRODUCTION IN PART OR AS A WHOLE WITHOUT THE WRITTEN PERMISSION OF FIDLOCK GmbH IS PROHIBITED.				<b>Drawing No:</b> Sewing path		<b>Revision:</b> V00		Page 1 of 1			
								Classification:				<b>A4</b>		Scale: 1:1	
<b>Rev.</b>	<b>Change</b>	<b>Date</b>	<b>Name</b>												

6 5 4 3 2 1