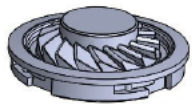
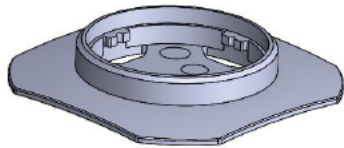


TOOL 30

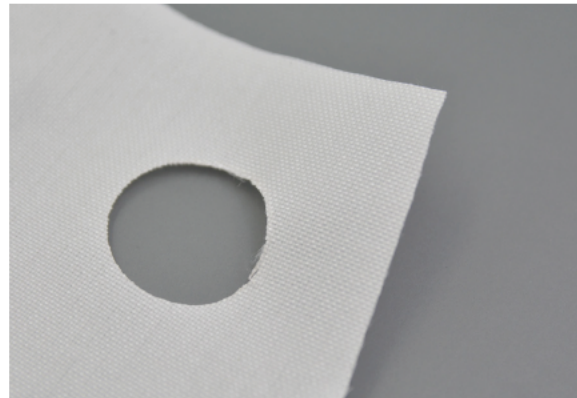


CLIP-IN CORE

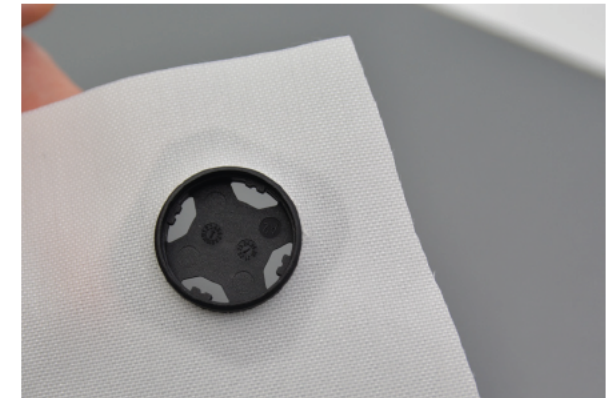


CLIP-IN BASE SEWABLE

- install the magnetic part at the very end of the production line
- save the magnet from heat treatment
- improve handling and just speed up the process
- available in left and right turning direction



- 01 • Make a hole of 26mm diameter into the fabric.
• The thickness of the material should not exceed 3mm.



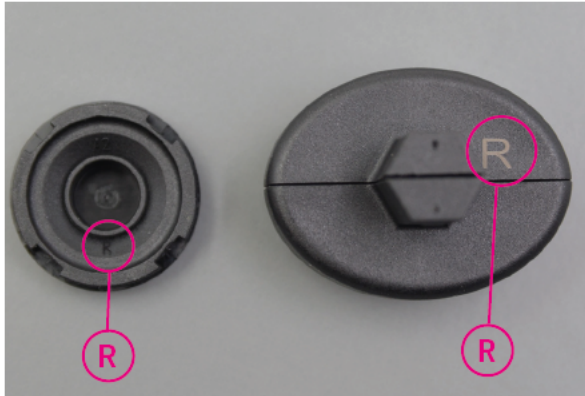
- 02 • Place clip-in base sewable from underneath.
• Make sure the area inside the ring is not covered.



- 03 • Stitch around the base part.



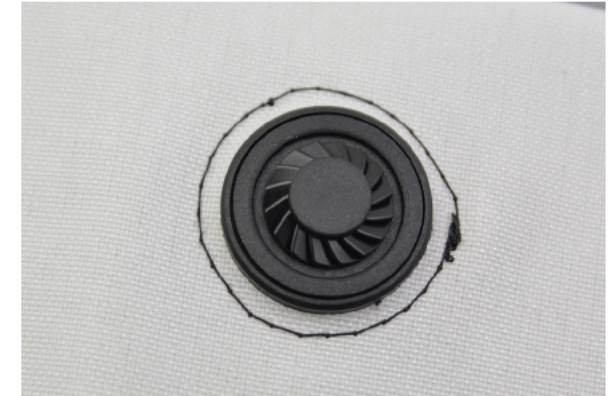
- 04 • Finish any work on your product that could damage the magnet or is easier to do without a magnet on it: sewing, heat treatment etc.



- 05 • To assemble the magnetic clip-in core make sure to choose the matching turning direction and tool.



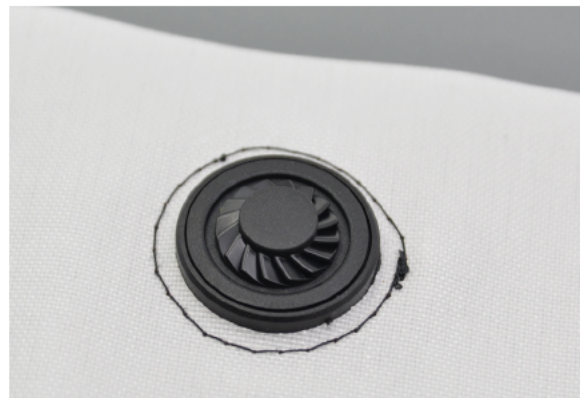
- 06 • To operate the tool easily use a 10mm hexnut and driver / ratchet.



- 07 • Check again turning direction and position clip-in core. NOTE: The assembly can not be reversed!



- 8 • Use the tool to turn the core and lock it. Turn clockwise for right turning parts and counter-clockwise for left turning part.



- 09 • Finished. Check function.